



# About FVA



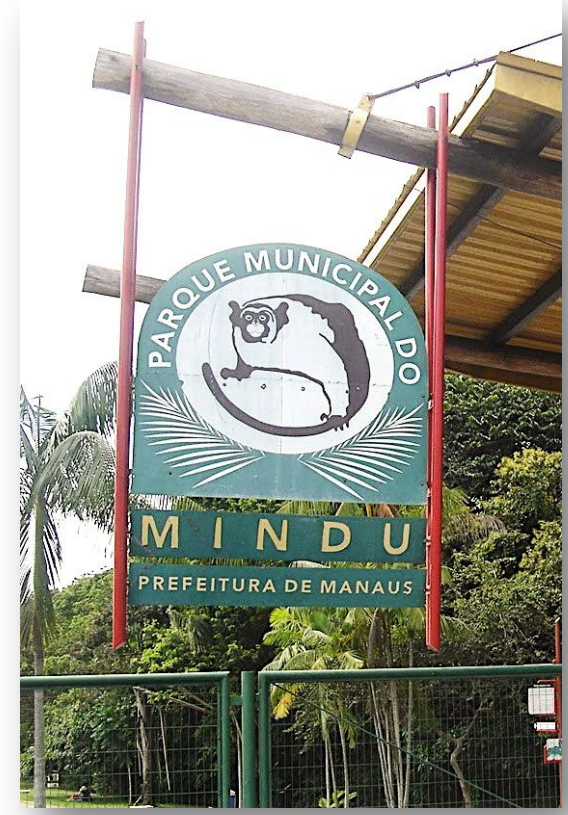
- 1st environmental NGO Amazon - 1990
- Promote the conservation of biodiversity in the Amazon through the generation and application of knowledge that contribute to human development on a sustainable basis in the Rio Negro basin.





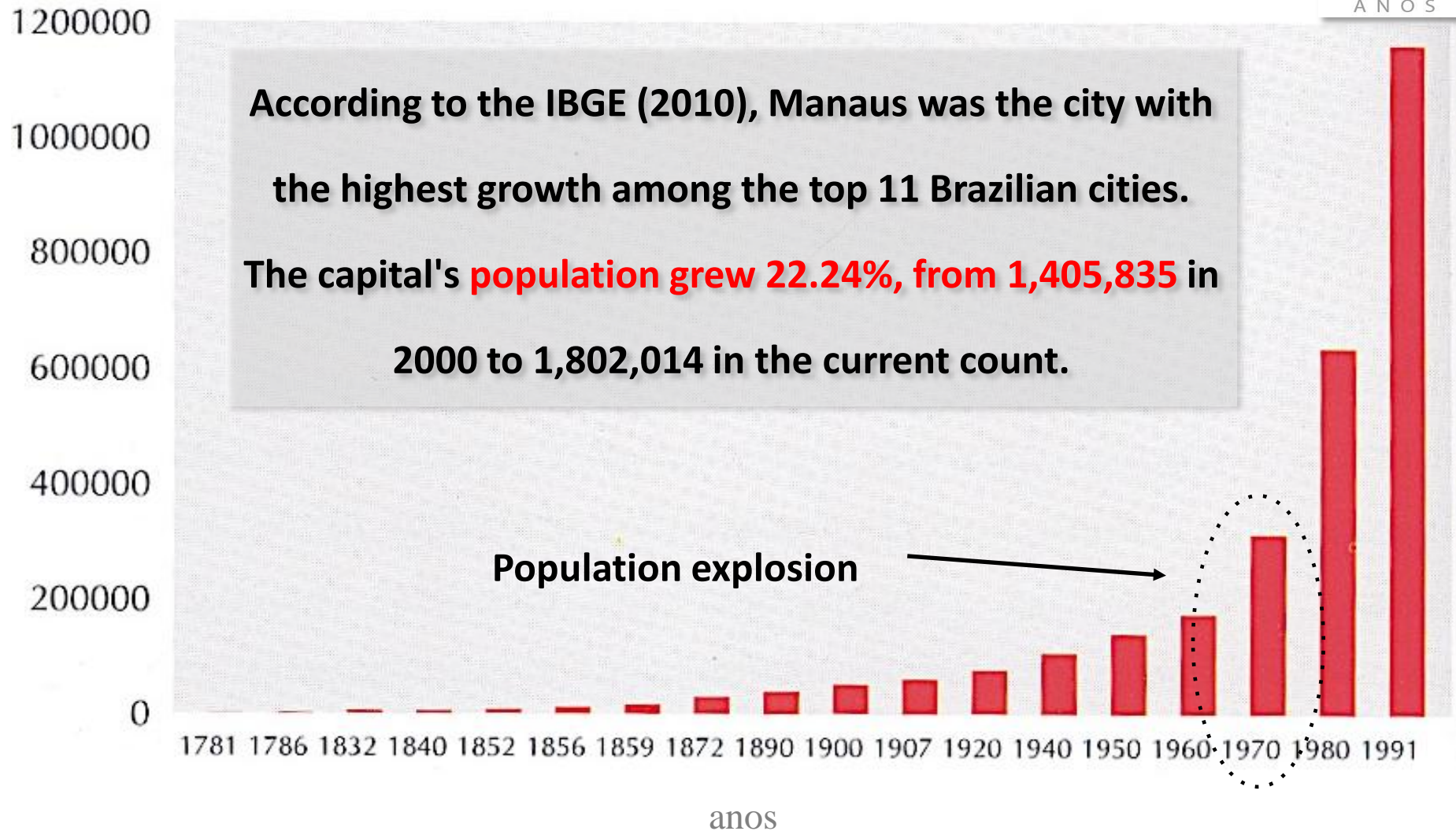
# Sauim-toed Education for Conservation

## Save A Forest For Me - 1992

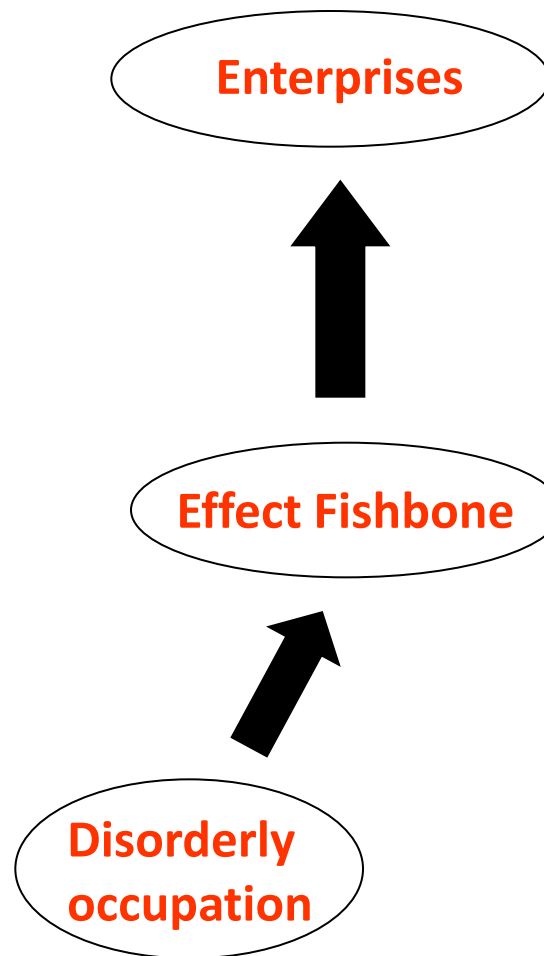
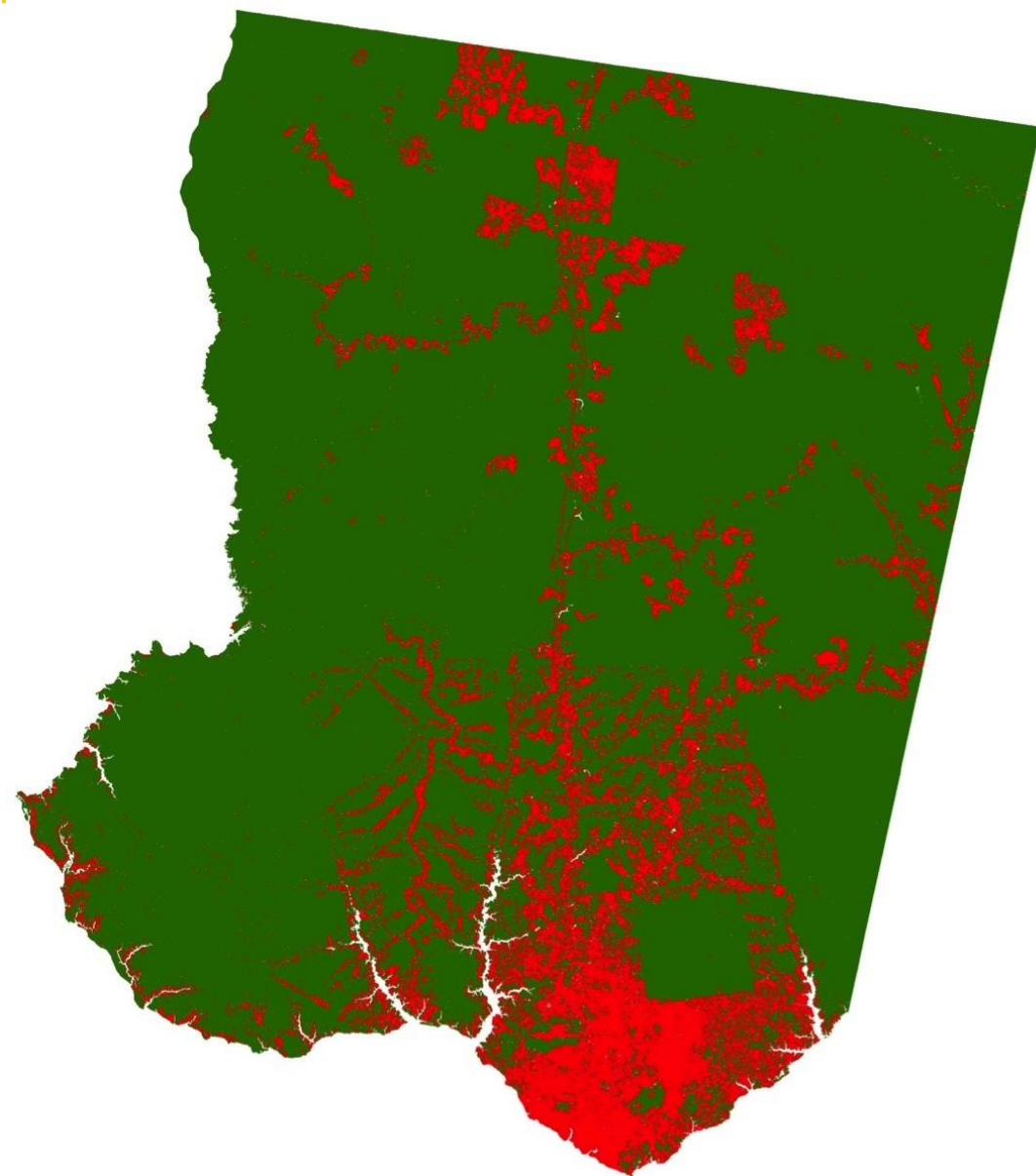




# Population growth Manaus

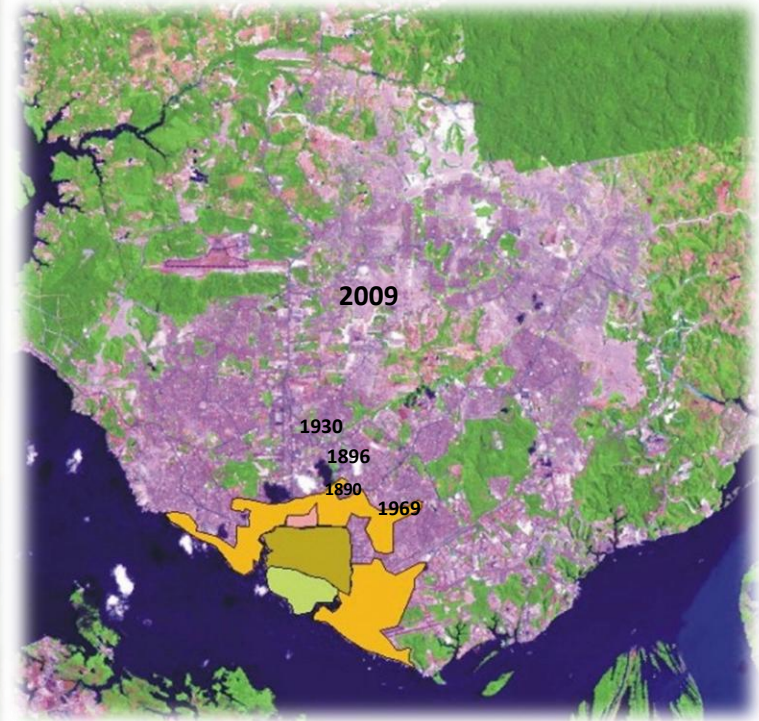


# Deforestation Patterns in Manaus city

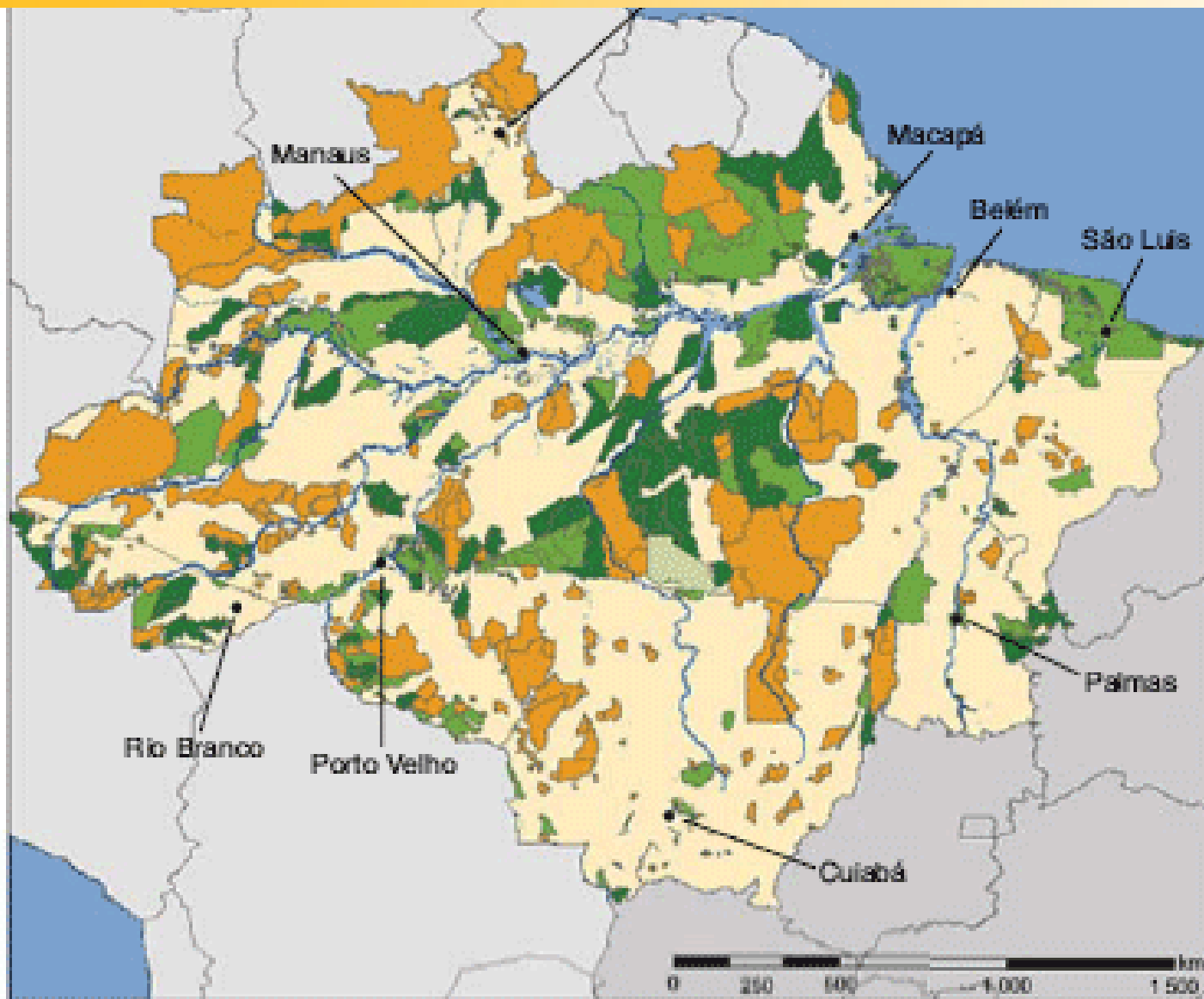




# Urban evolution of Manaus



# Conservation units



- Indigenus
- Federal
- State
- Military



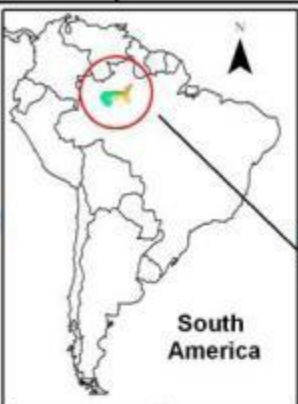
# Conservation units

Full protection - Ecological station, Biological Reserve, National Park, Natural Monument, and Wildlife refuge

Sustainable use - Environmental Protection Area, Area of Relevant Ecological Interest, National Forest, Extractive reserve, Fauna Reserve, Sustainable Development Reserve, and Private Reserve of Natural Heritage.



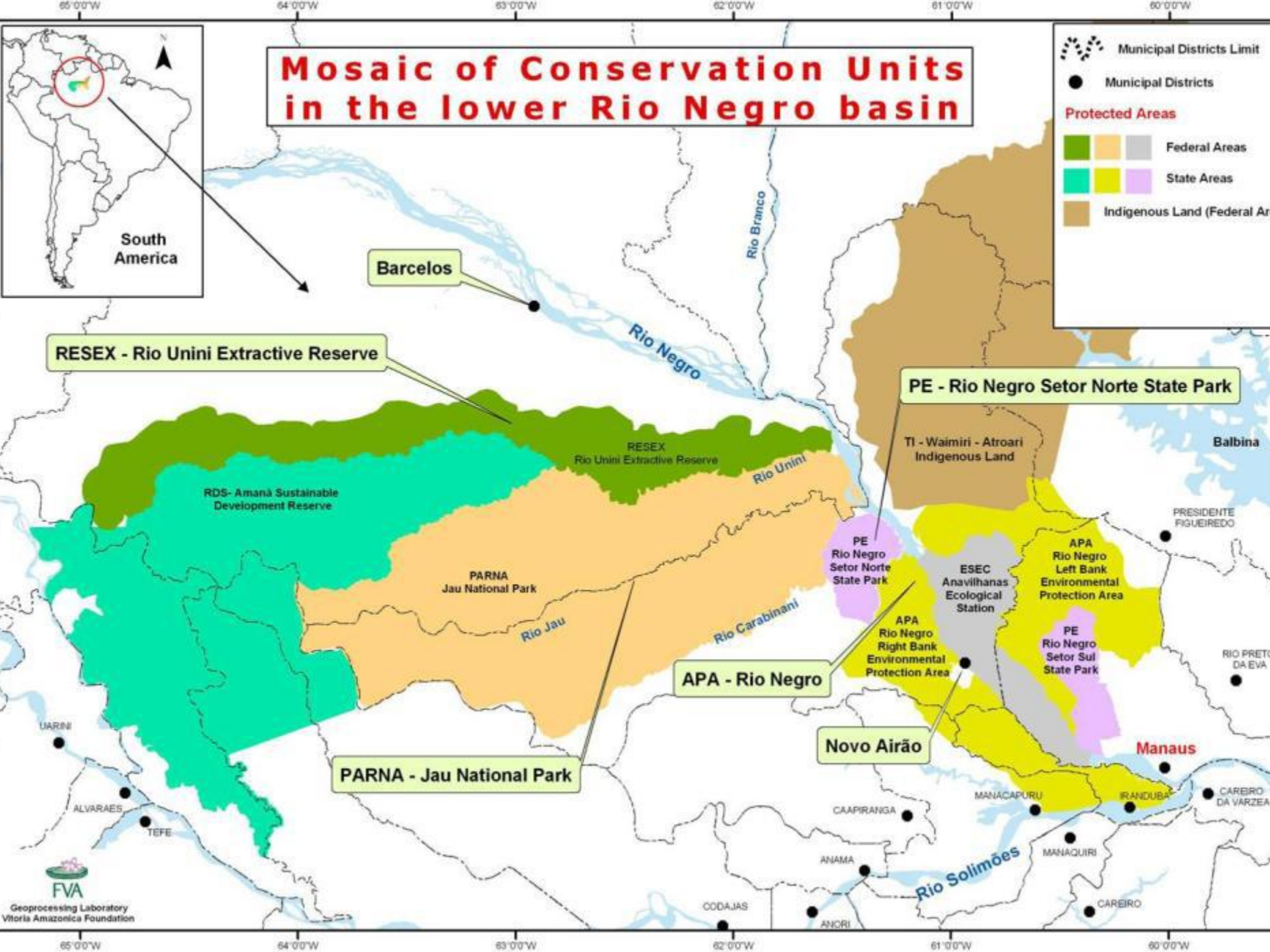
# Mosaic of Conservation Units in the lower Rio Negro basin



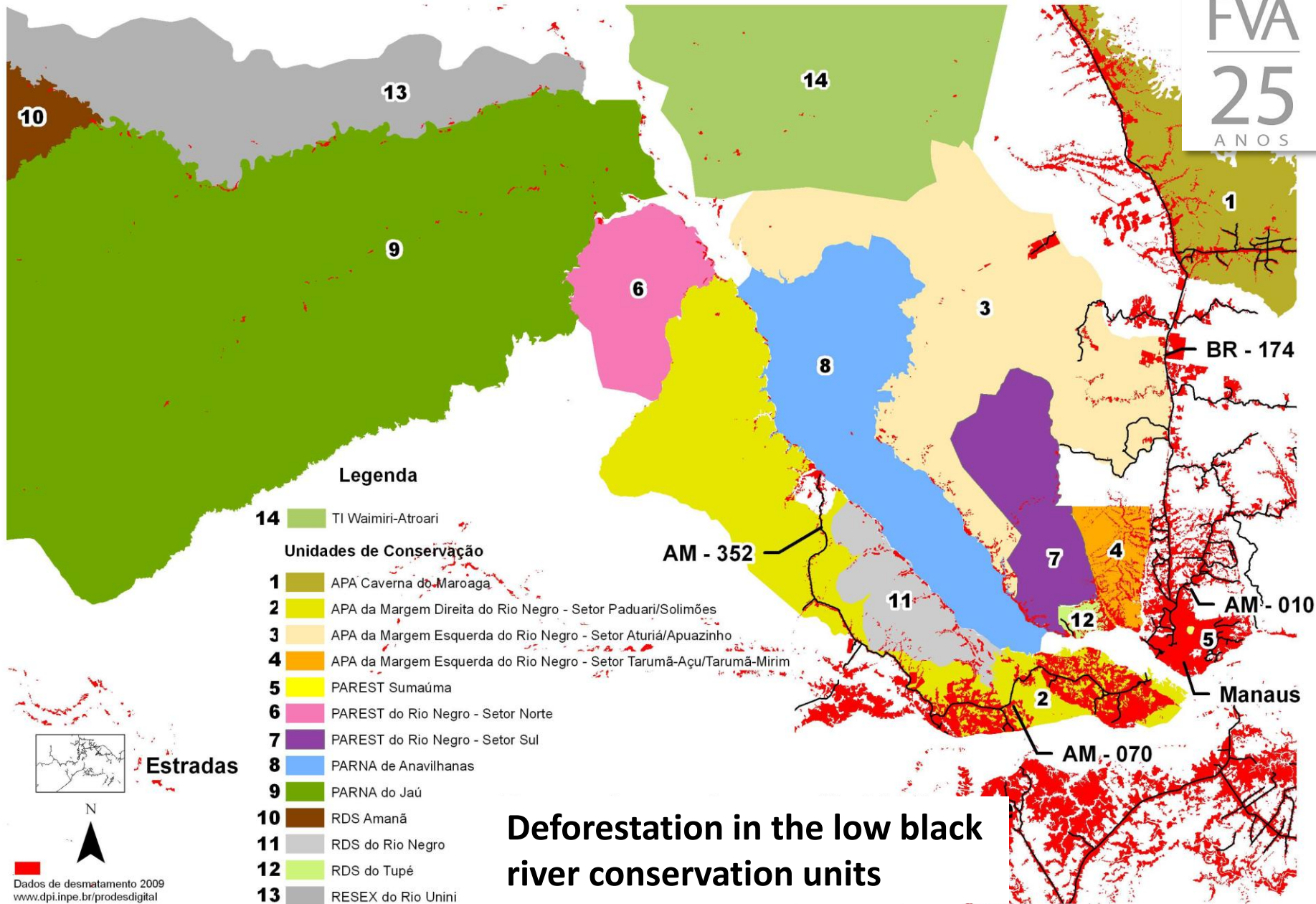
**Municipal Districts Limit**  
● Municipal Districts

**Protected Areas**

- Federal Areas
- State Areas
- Indigenous Land (Federal Area)



# Greater Manaus and its APs



**Deforestation in the low black river conservation units**

# Greater Manaus and its APs



Conservation units	Jurisdiction	Total area Unit (ha) *	Area Deforested (ha) *	% deforested
PAREST Sumaúma	State	51,0	51,0	<b>100,0</b>
RDS do Tupé	Municipal	11973,7	2964,9	<b>24,8</b>
APA da Margem Esquerda do Rio Negro - Setor Tarumã-Açu/Tarumã-Mirim	State	56024,3	9999,1	<b>17,8</b>
APA da Margem Direita do Rio Negro - Setor Paduari/Solimões	State	462082,3	64944,8	<b>14,1</b>
APA Caverna do Maroaga	State	376246,5	29539,4	<b>7,9</b>
RDS do Rio Negro	State	103058,5	5743,6	<b>5,6</b>
APA da Margem Esquerda do Rio Negro - Setor Aturiá/Apuazinho	State	574690,3	12538,5	<b>2,2</b>
PAREST do Rio Negro - Setor Sul	State	155881,6	2010,8	<b>1,3</b>
PARNA de Anavilhanas	Federal	360550,2	1899,2	<b>0,5</b>
PAREST do Rio Negro - Setor Norte	State	148627,9	736,5	<b>0,5</b>
RDS Amanã	State	2311190,6	9050,6	<b>0,4</b>
PARNA do Jaú	Federal	2408261,3	3721,8	<b>0,2</b>
RESEX do Rio Unini	Federal	865210,2	1036,3	<b>0,1</b>

\* área SIG  
FVA

\* área PRODES 2009



# The role of Protected Areas and future perspectives for Rio Negro

Scenarios and challenges for the Amazon and for civil society in Brazil



Long-way before 100% implementation of PAs

Need to involve communities (through socioeconomic development initiatives)

Need to develop capacity-building within municipalities (“*Centro de Referência*” FVA)

Manaus metropolitan area as a major urban deforestation/impact driver in the Amazon

Opportunity to plan in advance scenarios for rio Negro basin (mega-projects – energy, mining, ect.)

Opportunity to leverage strategies through partnerships

Opportunity to create and implement new PAs

Opportunity to develop new business models for NTFP vs. PAs “Proteção Integral”



# Thank you for your attention.



**FVA**

FUNDAÇÃO  
VITÓRIA  
AMAZÔNICA

**Fabiano Silva** - Executive Coordinator

[fabiano@fva.org.br](mailto:fabiano@fva.org.br)

**Sérgio Borges**

Knowledge and Conservation

[sergio@fva.org.br](mailto:sergio@fva.org.br)

**Yara Camargo**

Public Policy

[yara@fva.org.br](mailto:yara@fva.org.br)

**Ignácio Josa**

Integrated Human Development

[ignacio@fva.org.br](mailto:ignacio@fva.org.br)

