

Plant Ecology & Diversity

Publication details, including instructions for authors and subscription information:

<http://www.tandfonline.com/loi/tped20>

Soil-induced impacts on forest structure drive coarse woody debris stocks across central Amazonia

Demétrius L. Martins^a, Juliana Schiatti^a, Ted R. Feldpausch^b, Flávio J. Luizão^c, Oliver L. Phillips^d, Ana Andrade^e, Carolina V. Castilho^f, Susan G. Laurance^g, Átila Oliveira^h, Ieda L. Amaral^h, José J. Toledoⁱ, Laynara F. Lugli^j, José Luiz Purri Veiga Pinto^d, Erick M. Oblitas Mendoza^j & Carlos A. Quesada^d

^a Programa de Pós-Graduação em Ecologia, Instituto Nacional de Pesquisas da Amazônia, Manaus, Brasil

^b Geography, College of Life and Environmental Sciences, University of Exeter, Exeter, UK

^c Coordenação de Pesquisa em Dinâmica Ambiental, Instituto Nacional de Pesquisas da Amazônia, Manaus, Brasil

^d School of Geography, University of Leeds, Leeds, UK

^e Biological Dynamics of Forest Fragments Project, National Institute for Amazonian Research (INPA) and Smithsonian Tropical Research Institute, Manaus, Brazil

^f Brazilian Agricultural Research Corporation - EMBRAPA, Centro de Pesquisa Agroflorestal de Roraima, Boa Vista, Brasil

^g School of Marine and Tropical Biology, James Cook University, Cairns, Australia

^h Tropical Ecology Assessment and Monitoring Network (TEAM), Campus de Rorainópolis, Rorainópolis, Brasil

ⁱ Universidade Estadual de Roraima, Campus de Rorainópolis, Rorainópolis, Brasil

^j Programa de Pós Graduação em Ciências Florestais, Instituto Nacional de Pesquisas da Amazonia, Manaus, Brasil

Published online: 14 Mar 2014.

To cite this article: Demétrius L. Martins, Juliana Schiatti, Ted R. Feldpausch, Flávio J. Luizão, Oliver L. Phillips, Ana Andrade, Carolina V. Castilho, Susan G. Laurance, Átila Oliveira, Ieda L. Amaral, José J. Toledo, Laynara F. Lugli, José Luiz Purri Veiga Pinto, Erick M. Oblitas Mendoza & Carlos A. Quesada (2014): Soil-induced impacts on forest structure drive coarse woody debris stocks across central Amazonia, *Plant Ecology & Diversity*, DOI: [10.1080/17550874.2013.879942](https://doi.org/10.1080/17550874.2013.879942)

To link to this article: <http://dx.doi.org/10.1080/17550874.2013.879942>

PLEASE SCROLL DOWN FOR ARTICLE

Taylor & Francis makes every effort to ensure the accuracy of all the information (the "Content") contained in the publications on our platform. However, Taylor & Francis, our agents, and our licensors make no representations or warranties whatsoever as to the accuracy, completeness, or suitability for any purpose of the Content. Any opinions and views expressed in this publication are the opinions and views of the authors, and are not the views of or endorsed by Taylor & Francis. The accuracy of the Content should not be relied upon and should be independently verified with primary sources of information. Taylor and Francis shall not be liable for any losses, actions, claims, proceedings, demands, costs, expenses, damages, and other liabilities whatsoever or howsoever caused arising directly or indirectly in connection with, in relation to or arising out of the use of the Content.

This article may be used for research, teaching, and private study purposes. Any substantial or systematic reproduction, redistribution, reselling, loan, sub-licensing, systematic supply, or distribution in any

form to anyone is expressly forbidden. Terms & Conditions of access and use can be found at <http://www.tandfonline.com/page/terms-and-conditions>

Soil-induced impacts on forest structure drive coarse woody debris stocks across central Amazonia

Demétrius L. Martins^{a*}, Juliana Schiatti^a, Ted R. Feldpausch^b, Flávio J. Luizão^c, Oliver L. Phillips^d, Ana Andrade^e, Carolina V. Castilho^f, Susan G. Laurance^g, Átila Oliveira^h, Ieda L. Amaral^h, José J. Toledoⁱ, Laynara F. Lugli^j, José Luiz Purri Veiga Pinto^d, Erick M. Oblitas Mendoza^j and Carlos A. Quesada^d

^aPrograma de Pós-Graduação em Ecologia, Instituto Nacional de Pesquisas da Amazônia, Manaus, Brasil; ^bGeography, College of Life and Environmental Sciences, University of Exeter, Exeter, UK; ^cCoordenação de Pesquisa em Dinâmica Ambiental, Instituto Nacional de Pesquisas da Amazônia, Manaus, Brasil; ^dSchool of Geography, University of Leeds, Leeds, UK; ^eBiological Dynamics of Forest Fragments Project, National Institute for Amazonian Research (INPA) and Smithsonian Tropical Research Institute, Manaus, Brazil; ^fBrazilian Agricultural Research Corporation – EMBRAPA, Centro de Pesquisa Agroflorestal de Roraima, Boa Vista, Brasil; ^gSchool of Marine and Tropical Biology, James Cook University, Cairns, Australia; ^hTropical Ecology Assessment and Monitoring Network (TEAM), Campus de Rorainópolis, Rorainópolis, Brasil; ⁱUniversidade Estadual de Roraima, Campus de Rorainópolis, Rorainópolis, Brasil; ^jPrograma de Pós Graduação em Ciências Florestais, Instituto Nacional de Pesquisas da Amazonia, Manaus, Brasil

(Received 20 December 2012; final version received 20 December 2013)

Background: Coarse woody debris (CWD) is an essential component in tropical forest ecosystems and its quantity varies widely with forest types.

Aims: Relationships among CWD, soil, forest structure and other environmental factors were analysed to understand the drivers of variation in CWD in forests on different soil types across central Amazonia.

Methods: To estimate CWD stocks and density of dead wood debris, 75 permanent forest plots of 0.5 ha in size were assessed along a transect that spanned ca. 700 km in undisturbed forests from north of the Rio Negro to south of the Rio Amazonas. Soil physical properties were evaluated by digging 2-m-deep pits and by taking auger samples.

Results: Soil physical properties were the best predictors of CWD stocks; 37% of its variation was explained by effective soil depth. CWD stocks had a two-fold variation across a gradient of physical soil constraints (i.e. effective soil depth, anoxia and soil structure). Average biomass per tree was related to physical soil constraints, which, in turn, had a strong relationship with local CWD stocks.

Conclusions: Soil physical properties appear to control average biomass per tree (and through this affect forest structure and dynamics), which, in turn, is correlated with CWD production and stocks.

Keywords: anoxia; effective soil depth; carbon; forest dynamics; line intercept sampling; soil physical properties; topographic index; tropical forest; vegetation structure; necromass

Introduction

The interaction between different carbon stocks and flows constitute the carbon cycle. Of the different stocks, above-ground biomass is most often assessed in tropical forests, however coarse woody debris (CWD) is also an essential component because of its role in biogeochemical cycles (Chambers et al. 2000; Clark et al. 2002; Wilcke et al. 2005; Palace et al. 2008). Within tropical forests, CWD accounts for 6–25% of total above-ground carbon stocks (Nascimento and Laurance 2002; Rice et al. 2004; Baker et al. 2007; Palace et al. 2012), implying a total pan-Amazon CWD carbon stock of ca. 10 Pg (Chao et al. 2009a). The variation in CWD stocks across the Amazon basin is thought to be modulated by environmental factors, such as hydrology and soils, and by forest biomass itself (Rice et al. 2004; Baker et al. 2007; Chao et al. 2009a).

Amazonia holds a great diversity of tree species (ter Steege et al. 2000), and its forests vary substantially in both vegetation dynamics (Phillips et al. 2004; Quesada et al.

2012), and structure (Baker et al. 2004; Malhi et al. 2006; Nogueira et al. 2008; Feldpausch et al. 2011). Our current understanding suggests that CWD stocks generally decrease from north-eastern to south-western Amazonia (Baker et al. 2007; Chao et al. 2009a). Spatial variation in CWD stocks across the landscape may respond both to short-term climatic disturbances (e.g. Phillips et al. 2009; Negrón-Juárez et al. 2010) and to long-term differences in forest dynamics in response to environmental characteristics (Keller et al. 2004; Malhi et al. 2006; Chao et al. 2009a). Soils represent an important environmental gradient in Amazonia, with a wide variety of soil types across the basin and with diverse chemical and physical conditions (Quesada et al. 2010, 2011). Variations in soil physical properties across the basin have been related to a large proportion of the variation in tree turnover rates and mean forest wood density, with disturbance levels and vegetation structure of Amazonian forests being related to different soil types (Quesada et al. 2012).

*Corresponding author. Email: emailemetrius@gmail.com

Very few studies have tried to understand landscape-scale drivers of CWD stocks. Kissing and Powers (2010), working in secondary forests in Costa Rica, showed strong positive correlations between stand age and the amount of CWD. Chao et al. (2009a) working in mature forests in Amazonia showed that there was a relationship between forest structure and CWD, in particular with regard to biomass, wood density of living trees and mass of individual dead stems. Although these studies successfully associated CWD stocks with forest structure and dynamics, to our knowledge there has been no analysis of a potential effect of edaphic properties on CWD stocks. Since edaphic factors, such as effective soil depth and structure, are important factors controlling forest structure and dynamics (Jirka et al. 2007; Quesada et al. 2012), they are likely to be related to both the production and the stocks of CWD. We hypothesise that because poor soil physical conditions impose constraints on tree growth and survival, they result in increased stem turnover rates and, in turn, limit the maximum size that trees can attain. This way smaller trees yield smaller CWD stocks. Therefore, we may expect landscape-scale variation in soils to be linked to variation in CWD stocks. The forests south of the Rio Amazonas represent a vast, but poorly studied region in central Amazonia, both in terms of vegetation and soil. Broadly, this region (Figure 1) is characterised by hydromorphic soils (RADAMBRASIL 1978; Sombroek 2000) of poor physical structure (Quesada et al. 2011), in contrast to soils north of Manaus, which are dominated by well-drained deep soils. This region is also expected to have large variation in above-ground biomass (AGB) (IBGE 1997). Central Amazonia, therefore, represents an ideal testing

ground for exploring edaphic and vegetation linkages with CWD stocks.

We examined stocks of CWD as a function of variables related to biomass and stem density, and soil properties across central Amazonia in order to understand the factors that modulate the variation of these stocks. Specifically, we tested the hypothesis that CWD stocks were larger in soils with no physical constraints and smaller in soils with increased physical constraints.

Materials and methods

Study sites

Fieldwork was conducted across a ca. 700-km-long transect (Figure 1) in central Amazonia over a 1-year period (2010–2011). Data were collected in permanent plots of 0.5 ha, located north and south of the Rio Amazonas in the State of Amazonas, Brazil. There were two sites north of the Amazonas river, the Adolpho Ducke Forest Reserve (hereafter Ducke Reserve – 18 plots) and the Biological Dynamics of Forest Fragments Project site (BDFFP – 12 plots). The southern sites were located in the Purus – Madeira interfluvial zone on a ca. 600 km transect established along the Manaus–Porto Velho road (BR-319 – 45 plots).

The Ducke Reserve has 10,000 ha of mature *terra firme* tropical moist forest and is situated at the periphery of the city of Manaus (02° 95' S, 59° 95' W). The topography is undulating with alternating plateaux and rivulet valleys. The vegetation has a 30–37 m tall closed canopy, with emergent trees reaching 45 m (Ribeiro et al. 1999). Mean annual precipitation is 2524 mm (Coordenação de

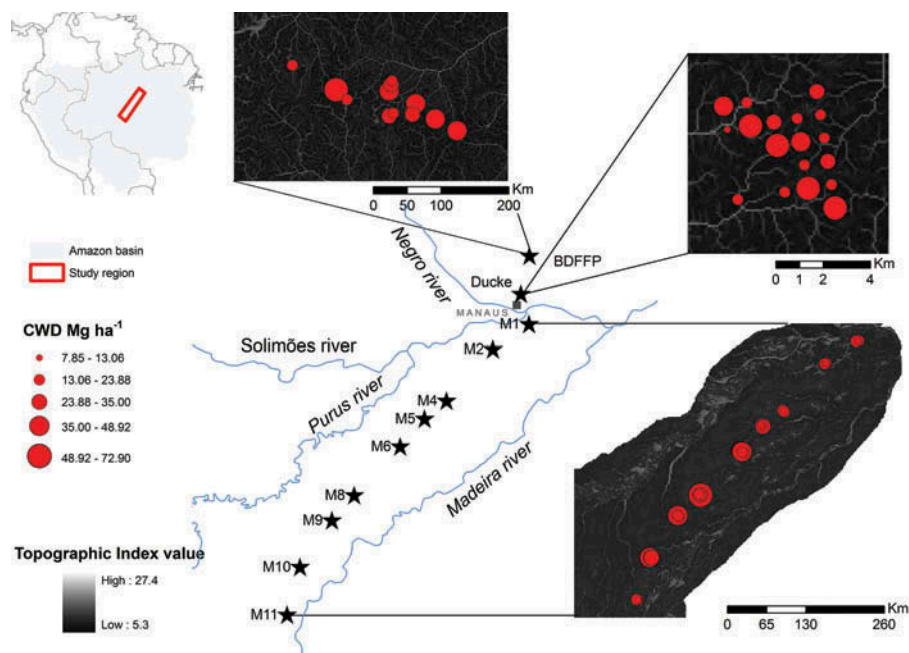


Figure 1. Spatial distribution of coarse woody debris (CWD) stocks and values of the topographic index (TI). Size of red circles are proportional to variation in CWD stocks. High values of the topographic index (light grey to white) indicate poorly drained areas.

Pesquisas em Clima e Recursos Hídricos, INPA, unpublished data). In general, soils are deep, well-drained and have low bulk density. Ferralsols and Acrisols are found along the slopes and plateaux, which are highly weathered and have favourable physical conditions (i.e. stable aggregate structure, associated with good drainage) (Chauvel et al. 1987; Quesada et al. 2010). Near streams and valley bottoms, wet and sandy soils (podzols) occur, but these were not included in this study. A total of 18 plots were sampled on Acrisols and Ferralsols for CWD and soils. Plots were at least 1 km apart and were 250 m long and 20 m wide (0.5 ha), following the topographic contour (Magnusson et al. 2005).

The BDFFP study site is located 80 km north of Manaus (2° 30' S, 60° 00' W). Data were collected in mature *terra firme* tropical moist forest, at least 1000 m away from fragment edges, in forest fragments >500 ha (Laurance et al. 1998). The forest canopy was 30–37 m tall, with emergent trees reaching up to 55 m. Annual mean precipitation ranged from 1900–3500 mm (Nascimento and Laurance 2002). CWD and soil were sampled in twelve 0.5 ha plots (positioned independently of topographic features (Laurance et al. 1998)) over Ferralsols and Acrisols.

The plots located south of the Rio Amazonas were spaced along the BR-319 road on the interfluvial area between the Purus and Madeira rivers. Plots located closer to Manaus had closed lowland evergreen forest vegetation (IBGE 1997), while plots located closer to Porto Velho had a more open-type lowland evergreen forest. This entire region is characterised by a flat topography with elevations varying between 30–50 m (asl) over large distances. Mean annual precipitation in this area varies from 2155–2624 mm obtained from WorldClim global coverage at 2.5-min resolution (Hijmans et al. 2005). The soils are predominantly Plinthosols and Gleysols (Sombroek 2000), generally having varying degrees of soil water saturation and anoxic conditions. Soil physical structure is generally restrictive to root growth, with very high bulk density in the subsoil, and thus these soils have varying degrees of hardness and effective soil depth. Subsoil layers that limit root penetration are frequent and vary from 30–100 cm in depth (RADAMBRASIL 1978; Sombroek 2000). In all sites, we sampled a total of 45 plots deployed in nine site clusters, the clusters being at distances between 40 and 60 km apart (Figure 1). Each site cluster was composed of a 5-km-long transect with five plots of 250 × 20 m in size, at intervals of 1 km; following the topographic contour.

Coarse woody debris (CWD) stocks

Field sampling of dead wood was made by (1) line intersect (van Wagner 1968) for fallen dead wood and (2) belt transects for standing dead trees (Palace et al. 2007; Chao et al. 2008). For line intersect sampling, every piece of fallen dead woody material (trees, palms, lianas) with a diameter ≥ 10 cm that crossed the transect line was

measured and classified into one of three decay classes, following Chao et al. (2008): (1) recently fallen, solid wood, sometimes presenting minor degradation; (2) sound wood but already showing some sign of decay, such as the absence of bark; (3) heavily decayed wood. In partly buried material, two perpendicular measures were taken and their mean was recorded as diameter. In plots that followed the topographic contour, the central line of the 250-m long plot was used as the intersect line. In square plots, the intersect line was also 250 m length but followed the plot perimeter. Each 250-m transect was considered as an independent individual sample of CWD. To reduce biased estimation arising from multiple crossing of CWD pieces and endpoint partial intersection (Affleck et al. 2005), we counted once only each piece of CWD (e.g. Gregoire and Valentine 2003). Pieces at the endpoint of an intersect line were included only if at least 50% of them was touched by the transect line. As these plots along the contour did not run in a straight line and sometimes doubled up and ran at an acute angle, we took provisions to avoid multiple crossing sampling bias. We discounted areas where the same piece of dead wood crossed the same transect line more than once. To compensate for lost plot area caused by multiple crossing, an identical area was added to the plot to keep the total sampling area at 0.5 ha. As we assumed that the orientation of pieces of dead wood on the forest floor was random we did not see advantage in using one line intersect design over another (see Bell et al. 1996).

The belt transects for estimating standing dead trees and broken snags were 20 m wide along the 250 m transect line. Standing dead stems with a diameter ≥ 10 cm were measured at 1.3 m height or at the lowest part of the snag, trying to avoid buttress roots where possible. If the snag was shorter than 1.3 m, the measurement was taken at the highest point possible. The height of snags taller than 2 m was measured with a digital hypsometer (Vertex Laser VL400 Ultrasonic-Laser Hypsometer III, Haglöf Sweden) to the point where the diameter was 10 cm. The length and diameter (≥ 10 cm) of attached branches in standing dead trees were visually estimated. To account for wood density variation following decay, standing dead trees and their occasional branches were also classified in the same way as wood for the line intersects.

CWD wood density

Samples of dead wood ($n = 726$) that crossed the line intersect in the plots were collected for measuring the density of CWD (dry weight per unit volume). A chainsaw was used to cut a disk sample from hard pieces. Softer wood pieces were sampled by using a bush knife. The disks were sub-sampled randomly. Void spaces were taken into account for volume estimation by visually estimating their proportion (Keller et al. 2004), but were not used for density correction, which may have caused an overestimation of up to 10% in some decay classes (Keller et al. 2004; Chao et al. 2008).

CWD density was determined as the ratio of oven dry mass and fresh wood volume. The water-displacement method was used to determine fresh volume (Chave 2005). Before measuring, the volume segments of samples in classes 1 and 2 were pre-wetted for about 2 h to fill pores with water, because dry wood absorbs more water and leads to overestimating density values. As material in decay class 3 was very friable, samples in this class were saturated with water for several minutes. After volume measurement the segment samples were oven-dried at 60 °C until constant mass (Keller et al. 2004). The density of each sample segment was then calculated and used to average the density of each decay class at each site.

Vegetation

Vegetation parameters (basal area, density of trees and palms, above-ground biomass and wood density of live individuals) were acquired from a database of the permanent vegetation plots. As tree-height data were unavailable for the permanent sample plots, an allometric model presented in Feldpausch et al. (2012) to estimate tree height (H) was applied to reduce bias in biomass estimates

$$H = 48.131 \times (1 - \exp(-0.0375 \times D^{0.8228})) \quad (1)$$

where D is the tree diameter at breast height.

To estimate plot-level dry above-ground biomass (AGB) we used the allometric model developed by Feldpausch et al. (2012). The variables included in this model were tree diameter at breast height (D), wood density (ρ_t) and height (H) for tree T .

$$AGB = \exp(-2.9205 + 0.9894 \times \ln(D^2 \times \rho_t \times H)) \quad (2)$$

To account only for stocks of biomass that related to branches ≥ 10 cm diameter we reduced the estimated AGB values of each tree by 15% (N. Higuchi, unpublished data cited in Chambers et al. 2000.).

Wood density of living trees was obtained from a database (Chave et al. 2009; Zanne et al. 2009). The individuals in each plot were matched to wood density at species level. In cases where this information was unavailable, matches were made by genus average or family (as in Baker et al. 2004). When species information for a tree was missing, the mean density of known trees, weighted by basal area of the plot, was used. Species-level identifications were made for 53.7% of stems, with an additional 37.9% identified to genus, 6.2% to family and 2.2% unidentified. At the BR-319 transect plots (south from the Rio Amazonas) there were no floristic data available. For those plots an average living wood density was estimated for each plot by sampling wood cores in at least 20 trees per plot (trees ≥ 30 cm diameter only, with a total of 1005 trees sampled in the region by J. Schiatti, unpublished data).

Soil data

Soil sampling followed a standard protocol (<http://www.geog.leeds.ac.uk/projects/rainfor/pages/manualstodownload.html>); for a full description see Quesada et al. (2010). We used the World Reference Bases for soil resources to classify soil types (IUSS Working group WRB 2006). Three soil pits were dug at the Ducke Reserve, and three at the BDFFP site; one soil pit was dug in six out of nine site clusters along the BR-319. To increase spatial coverage of soil properties, auger sampling was carried out in plots without soil pits at all sites. All pits were 2 m in depth, even if the effective soil depth was shallower. Effective soil depth is defined here as the depth where clear impeding layers to root growth occur. Soil was sampled from the pit walls to estimate bulk density, using specially designed container rings of known volume at the following depths: 0–10, 10–20, 20–30, 30–50, 50–100, 100–150, 150–200 cm.

Topography and soil properties that could limit root growth were assessed semi-quantitatively (Table 1; Quesada et al. 2010). The score for each category was then summed to form a general index of soil physical quality (Π): Π_1 was formed by the sum of scores for

Table 1. Score table for soil physical and chemical properties.

| Category | Score |
|--|-------|
| Effective soil depth (soil depth, presence/absence of hardpans) | |
| Shallow soils (<20 cm) | 4 |
| Medium shallow (20–50 cm) | 3 |
| Hardpan or rock that allows vertical root growth; other soils between 50–100 cm deep. | 2 |
| Hardpan, rocks or C horizon ≥ 100 cm deep | 1 |
| Deep soils ≥ 150 cm | 0 |
| Soil structure | |
| Very dense, very hard, very compact, without aggregation, restrictive to roots | 4 |
| Dense, compact, little aggregation, lower root restriction | 3 |
| Hard, medium to high density and/or with weak or block-like structure | 2 |
| Loose sand, slightly dense; well-aggregated in sub-angular blocks, discontinuous pans | 1 |
| Good aggregation, friable, low density | 0 |
| Topography | |
| Very steep ($>45^\circ$) | 4 |
| Steep (20–44°) | 3 |
| Gently undulating (8–19°) | 2 |
| Gently sloping (1–8°) | 1 |
| Flat (0°) | 0 |
| Anoxic conditions | |
| Constantly flooded; patches of stagnant water | 4 |
| Seasonally flooded; soils with high clay content and very low porosity and/or dominated by plinthite | 3 |
| Deep saturated zone (up to 50 cm below surface); redox features | 2 |
| Deep saturated zone (maximum height of saturation >100 cm deep); deep redox features | 1 |
| Unsaturated conditions | 0 |

effective soil depth, soil structure quality, topography and indicators of anoxia. Π_2 equalled Π_1 less anoxia. These semi-quantitative scores were used in statistical analyses. Soil fertility was similar across the entire study area (RADAMBRASIL 1978).

Additional environmental data

Mean annual precipitation and precipitation in the driest quarter were obtained from the WorldClim global database at 30 arc seconds (ca. 1 km) resolution (Hijmans et al. 2005).

The topography data were obtained using a digital elevation model (DEM) at 90-m spatial resolution from Shuttle Radar Topography Mission (SRTM). A topographic index (TI) that estimates drainage for each SRTM pixel (Moore et al. 1991) was calculated using ArcMap (ESRI, 2005)

$$TI = \ln\left(\frac{\alpha}{\tan\beta}\right) \quad (3)$$

where α is the contributing upslope drainage area and β is the slope.

Sites with higher TI values have greater drainage constraints (e.g. water saturation). This topographic feature may be important as there is a relationship between TI and tree species distribution (Feldpausch et al. 2006) that could be related to CWD distribution across the landscape.

Calculations

Volume of line intersect sampling (V_{LIS}) ($\text{m}^3 \text{ha}^{-1}$) and fallen volume in each decay class were estimated using the following equation (van Wagner 1968)

$$V_{LIS} = \frac{\pi^2 \times \sum d_i^2}{8 \times L} \quad (4)$$

where d_i is the diameter (cm) of each CWD segment i and L (m) is the length of the transect line.

For the estimation of standing dead volume (V_{Belt}) ($\text{m}^3 \text{ha}^{-1}$), Smalian's formula was used

$$V_{Belt} = H \left[\frac{\pi \left(\frac{D_1}{2}\right)^2 + \pi \left(\frac{D_2}{2}\right)^2}{2} \right] \quad (5)$$

where H (m) is the height of the tree, D_1 and D_2 are the diameters (cm) at 1.3 m above the ground and at the top of the snag, respectively. To estimate D_2 a taper function was used (Chambers et al. 2000)

$$D_2 = 1.59 \times D_1(H^{-0.091}) \quad (6)$$

where D_2 is the diameter at height H for a trunk of given D_1 . This is an equation defined for central Amazonian trees and often used in other studies (Clark et al. 2002;

Palace et al. 2007). CWD (Mg ha^{-1}) in each of the three decay classes was calculated as follows

$$CWD = V_i \times \rho_i \quad (7)$$

where V ($\text{m}^3 \text{ha}^{-1}$) and ρ (Mg m^{-3}) correspond to volume and density in decay class i , respectively.

To calculate error for each CWD_i (E_{CWD}) the following equation was used

$$E_{CWD} = V E_\rho + \rho E_V \quad (8)$$

where E_ρ and E_V are the errors in density and volume, respectively. Equation (8) is valid when V and the density of the material in the respective class are not correlated (Keller et al. 2004). In this study covariance between V and density, although significant, ($P = 0.0175$) was very small ($r^2_{adj} = 0.01965$). To estimate total error in mass in each decay class we used a conservative approach by summing the errors of each component.

Statistical analysis

For the statistical analysis, plots were divided into three groups: (1) no physical restriction (NR, index Π_1 value ≤ 2); (2) low levels of soil physical restriction (LRL, index Π_1 value between 2 and 6 and anoxia value ≤ 1); and (3) high restriction levels (HRL, index Π_1 value ≥ 6 and anoxia value > 1). Physically restricted soils (LRL and HRL) occurred in the interfluvial region, but not north of Manaus.

Each plot was considered as a sample unit in linear regressions ($n = 75$). Correlations were used to choose which non-collinear variables could be combined in the same regression model. In an attempt to better understand landscape-scale CWD patterns, CWD relationships with environmental, climatic and edaphic variables were explored by using mixed models (nlme package in R Pinheiro et al. 2012) with a random intercept, as the study had a hierarchical design. Therefore, the BDFFP, the Ducke Reserve and each of the nine site clusters along the BR-319 were all considered as groups, within which the individual plots were nested. CWD values were transformed, using the natural logarithm (\ln) to improve normality. To understand the variance explained by the models, we used a method suggested by Nakagawa and Shielzeth (2013) for obtaining a marginal R^2 ($R^2_{(m)}$), which describes the proportion of variance explained by the fixed factor, and conditional R^2 ($R^2_{(c)}$), which describes the proportion of variance explained by both the fixed and random factors. To compare mean wood density of decay classes in each forest type we also used mixed models. All analyses were carried out in R version 3.0.0 (R Development Core Team 2013).

Results

Variations in edaphic properties

Sites located north of the Amazonas river had no physical soil restriction (Figure 2(a)). All of these soils were deep, had low subsoil bulk density, had good particle aggregation (good structure, friable) and were well drained (Table 2). Conversely, soils in the southern plots (BR-319) were generally shallow (maximum effective soil depth varying from 20–100 cm), with high subsoil bulk density (Table 2), little or no aggregation (deficient structure, very hard and compact), thus being generally root-restrictive, and had varying levels of anoxic conditions (from seasonally flooded with patches of stagnating

water to soils showing redox features, such as mottling) (Table 2). Some site clusters were severely constrained (Π_1 values ranging from 6–11) while other plots/site clusters had lower Π_1 values, ranging from 2–6. All soils along the BR-319 had poorer physical conditions when compared to the predominantly ferralsols/acrisols at plots north of the Amazonas river.

Stocks of CWD

The volume of CWD varied significantly among soil groups (i.e. NR, LRL and HRL) and decay classes (Table 3). The volume of total CWD in forests growing on NR soils ($69.5 \pm 11.1 \text{ m}^3 \text{ ha}^{-1}$) was similar to that on

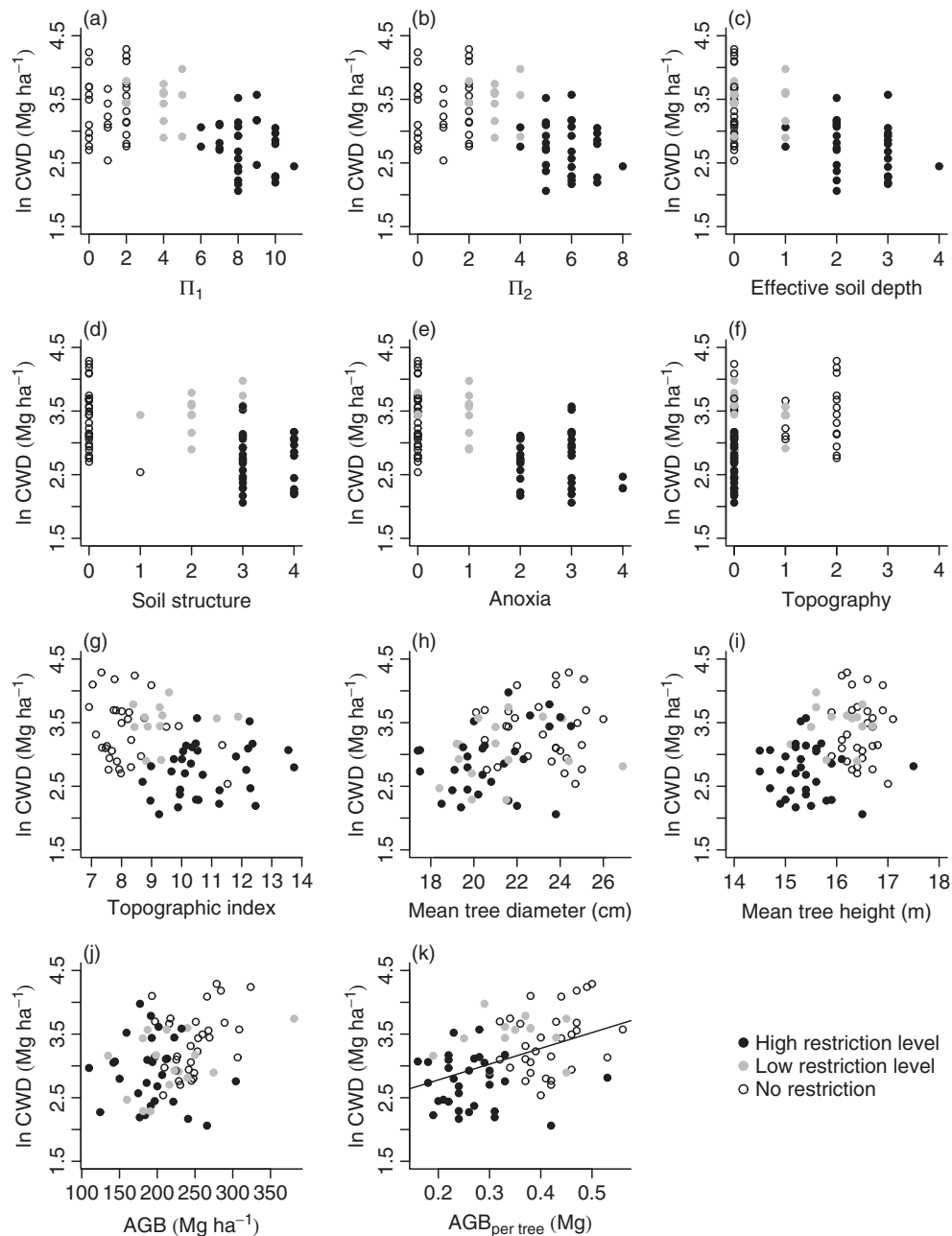


Figure 2. Simple relationships between coarse woody debris (CWD) and environmental variables. All CWD values were ln transformed.

Table 2. Range of scores edphic physical conditions in the three different soil groups, based on their physical properties, anoxia level and topographic position in two regions of central Amazonia, Brazil.

| Soil parameter | NR | LRL | HRL |
|--|-------------------|------------|--------------------|
| Soil type | Ferralsol/acrisol | Plinthosol | Gleysol/plinthosol |
| Anoxia | 0 | 0–1 | 2–4 |
| Depth | 0 | 0–2 | 1–4 |
| Structure | 0–1 | 1–2 | 2–4 |
| Topography | 0–2 | 0–1 | 0–1 |
| Bulk density* (g cm ⁻³) | 0.8–1.2 | 1.0–1.6 | 1.2–1.7 |
| Π ₁ | 0–2 | 2–6 | 6–11 |
| Π ₂ | 0–2 | 2–6 | 4–8 |

NR, no physical restriction; LRL, low level of physical restriction; HRL, high level of physical soil restriction; *bulk density was measured at a reference depth of 50 cm; Π₁, sum of the four soil parameters; Π₂, sum of soil parameters with the exception of the anoxia parameter. See Table 1 for score values.

LRL soil ($69.5 \pm 11.6 \text{ m}^3 \text{ ha}^{-1}$). In contrast, forests on HRL had significantly less CWD ($33.8 \pm 2.0 \text{ m}^3 \text{ ha}^{-1}$) than forests on the other two soil groups.

Densities of CWD samples were significantly different among decay classes, decreasing considerably with degree of decomposition (Table 3). Nevertheless, there was no significant difference among soil groups that grew on soils with different levels of soil physical constraints (decay class, $P < 0.001$; soil groups, $P = 0.76$)

CWD stocks varied in a predictable way across our study area (Figure 1), and also varied considerably at the site cluster level, with the northern sites showing the largest variation. For instance, CWD ranged from 6.7–72.9 Mg ha⁻¹ among the plots of the Ducke Reserve. In comparison, CWD stocks varied little and were consistently lower at site clusters 1 to 5 along the BR-319 road (just south of Manaus), and also at site cluster 11, located

at the far south end of the BR-319 road. Along the middle (site clusters 6 to 10), CWD was locally highly variable.

Total CWD stocks followed the same pattern as total CWD volume, which is expected as CWD stock estimate is a function of site-specific CWD density values, and the density of decay classes did not vary significantly among soil groups (Table 3). Forests in NR soil had a mean CWD stock of $33.1 \pm 7.1 \text{ Mg ha}^{-1}$ (Table 5) and these values did not differ significantly from LRL soils. However, CWD stocks for HRL soils were significantly and substantially lower than in both other soil types (soil groups, $P < 0.001$; decay class, $P < 0.001$).

Standing and fallen fractions of CWD

Significant differences in fallen CWD were found among all soil groups ($P < 0.001$) (Table 4). Mean stocks of standing CWD represented 20–30% of the total CWD in the study area and this fraction did not differ significantly among soil groups ($P = 0.08$) with NR showing higher stocks than HRL. Fallen dead wood CWD stocks were significantly highest in LRL, intermediate in NR forests and lowest in HRL (Table 4). The proportion of fallen stocks to total CWD did not differ among soil groups. Also, the ratio of standing to fallen dead wood was not different among soil groups. The CWD to AGB ratio on the NR soils (0.13 ± 0.01) and LRL (0.17 ± 0.01) was significantly greater than on HRL soil (0.08 ± 0.01) ($P < 0.001$).

Vegetation

Each of the three soil groups was associated with a distinct forest structure (Table 5). Above-ground biomass was highest at the NR forests and lowest at HRL, and with the AGB at LRL sites not being significantly different

Table 3. Mean (\pm SE) coarse woody debris (CWD) volume, CWD density and CWD mass in forests on soils with no (NR), low (LRL) and high (HRL) restriction in central Amazonia.

| | NR ^{amx} | LRL ^{amx} | HRL ^{any} |
|---|----------------------|----------------------|-----------------------|
| Wood density (cm ⁻³) per decay class | | | |
| Class 1 ^A | 0.68 \pm 0.02 (75) | 0.67 \pm 0.04 (20) | 0.61 \pm 0.02 (88) |
| Class 2 ^B | 0.55 \pm 0.02 (66) | 0.53 \pm 0.03 (43) | 0.48 \pm 0.01 (176) |
| Class 3 ^C | 0.32 \pm 0.01 (88) | 0.34 \pm 0.02 (24) | 0.33 \pm 0.02 (97) |
| CWD volume (m ³ ha ⁻¹) | | | |
| Class 1 ^M | 12.3 \pm 3.0 | 19.8 \pm 3.8 | 6.9 \pm 1.2 |
| Class 2 ^N | 26.1 \pm 4.7 | 29.9 \pm 3.4 | 15.7 \pm 1.3 |
| Class 3 ^N | 31.1 \pm 3.4 | 19.8 \pm 4.4 | 11.1 \pm 1.2 |
| Total | 69.5 \pm 11.1 | 69.5 \pm 11.6 | 33.7 \pm 3.7 |
| CWD mass (Mg ha ⁻¹) | | | |
| Class 1 ^X | 8.4 \pm 2.3 | 13 \pm 3.3 | 4.2 \pm 0.9 |
| Class 2 ^Y | 14.4 \pm 3.1 | 15.3 \pm 2.7 | 7.7 \pm 0.8 |
| Class 3 ^X | 10.3 \pm 1.4 | 6.8 \pm 1.9 | 4.1 \pm 0.7 |
| Total | 33.1 \pm 7.1 | 35.1 \pm 7.2 | 16.1 \pm 2.6 |

Number in parentheses is the number of samples (n). Uppercase superscript letters indicate statistically significant differences among decay classes ($P < 0.05$); lowercase superscript letters are for differences among soil groups. Multiple comparison tests (Tukey HSD) are labelled by the letters A, B, C and a for density in different decay classes; M, N, m and n for CWD volume; X, Y, x and y for CWD mass.

Table 4. Mean (\pm SE) mass of fallen and standing coarse woody debris (CWD) in forests growing on soils with no (NR), low (LRL) or high (HRL) physical restriction in plots in central Amazonia, north and south of the Rio Amazonas.

| | NR ^{ax} | LRL ^{aby} | HRL ^{bz} |
|-----------------|------------------|--------------------|-------------------|
| Standing | | | |
| Class 1 | 3.8 \pm 1.1 | 2.7 \pm 0.9 | 1.2 \pm 0.3 |
| Class 2 | 4.2 \pm 1.0 | 2.7 \pm 0.7 | 2.2 \pm 0.5 |
| Class 3 | 2.4 \pm 0.5 | 1.6 \pm 0.7 | 1.0 \pm 0.2 |
| Fallen | | | |
| Class 1 | 4.7 \pm 1.4 | 10.6 \pm 2.5 | 3.0 \pm 0.6 |
| Class 2 | 10.2 \pm 2.3 | 13.1 \pm 1.4 | 5.5 \pm 0.6 |
| Class 3 | 7.9 \pm 1.2 | 5.1 \pm 1.3 | 3.2 \pm 0.4 |

Statistically significant differences at $P < 0.05$ among soil groups (NR, LRL, HRL) are indicated by a and b for total standing CWD; and by x, y and z for total fallen CWD.

Table 5. Average (\pm SE) above-ground biomass (AGB), stem density, mean tree height and DBH, coarse woody debris (CWD) and CWD:AGB ratio in soils with no (NR), low (LRL) and high (HRL) levels of restriction in plots in central Amazonia, north and south of the Rio Amazonas.

| | NR | LRL | HRL |
|-------------------------------|------------------------------|-------------------------------|-------------------------------|
| AGB (Mg ha ⁻¹) | 248.2 \pm 6.1 ^a | 218.8 \pm 16.6 ^b | 198.8 \pm 7.2 ^b |
| Stems (ha ⁻¹) | 597.9 \pm 8.7 ^a | 635.3 \pm 27.2 ^a | 766.2 \pm 30.3 ^b |
| AGB per tree (Mg) | 0.42 \pm 0.01 ^a | 0.35 \pm 0.02 ^b | 0.26 \pm 0.02 ^c |
| Mean height (m) | 16.5 \pm 0.1 ^a | 16.0 \pm 0.1 ^b | 15.4 \pm 0.1 ^c |
| DBH (cm) | 23.1 \pm 0.3 ^a | 22.7 \pm 0.4 ^a | 20.3 \pm 0.3 ^b |
| CWD (Mg ha ⁻¹) | 33.1 \pm 3.1 ^a | 33.7 \pm 2.7 ^a | 16.8 \pm 1.2 ^b |
| CWD:AGB | 0.13 \pm 0.01 ^a | 0.14 \pm 0.01 ^a | 0.08 \pm 0.01 ^b |

Different letters indicate significant differences between means ($P < 0.05$) in each row. CWD:AGB, ratio of total CWD to AGB for trees >10 cm DBH.

from HRL. Stem density was significantly higher in HRL than in either NR or LRL (variables associated with individual tree size were usually significantly different among soil groups. For instance, the average biomass per tree was significantly different among soil groups (NR > LRL > HRL; Table 5). Mean tree height (estimated from DBH) was also significantly different among the three soil groups (Table 5); mean DBH was significantly lower in HRL soil than in NR and LRL (Table 5).

Determinants of CWD across landscape

CWD was significantly related to average biomass per tree, the only significant forest structure parameter directly related to CWD ($r^2_m = 0.09$, $r^2_m = 0.31$, Figure 2(j)). This shows that trees in HRL soil are generally smaller and store individually less biomass than those on LRL and NR soils, with LRL showing an intermediary behaviour. Considering further the relationship between CWD stocks and parameters related to average maximum tree size (mean tree diameter, estimated

height and AGB per tree, Figure 2), we observed a clear separation among the different soil groups, with forests consistently showing lower CWD on HRL where trees were smaller, and high CWD on NR where trees were larger. Forests on LRL consistently appeared as an intermediary group, with some superposition on NR, but with a clear separation from HRL, despite these two groups occurring in the same geographical area (HRL and LRL only occur along the BR-319 interfluvial area). Since plot-level variation in vegetation biomass stocks could potentially influence CWD, whereby larger AGB stocks may produce larger CWD stocks, we repeated our analyses after normalising data, using a CWD to above-ground biomass ratio (CWD:AGB, Table 6). This resulted in stem density and wood specific gravity becoming significantly related to CWD.

The presence and magnitude of soil physical constraints varied greatly across the study area and were generally negatively related to CWD (Figures 3(a) to (e); Table 6). Individual soil parameters were significantly related to CWD, with effective soil depth and anoxia being the best correlated variable (Table 6). Topography, including the continuous topographic index (TI, a proxy for hydrological gradients) had no significant relationship with CWD due to the characteristics of the study sites discussed above.

Π_1 , which represents the combination of all physical parameters, was strongly related to CWD (Table 6). This varied from score 0 (very good physical conditions) to 11 (high level of root growth restriction, Figure 2(a)) with the soils having high levels of physical constraints ($\Pi_1 > 6$) showing much lower values of CWD. The index Π_2 showed a similar trend to Π_1 (Figure 2(b), Table 6). The only difference between Π_1 and Π_2 was the absence of anoxia in Π_2 . We found no significant relationship between CWD and climatic variables (mean annual precipitation and precipitation in the driest quarter of the year (Table 6)).

Discussion

Large-scale patterns in central Amazonia

CWD is a substantial fraction of forest carbon stocks. We found that by adding CWD stocks to the above-ground biomass pool total the above-ground wood mass stocks in forests in NR, LRL and HRL soils increased by ca. 13%, 17% and 8%, respectively. We also found large variability in CWD stocks, often with considerable variability at local level (Figure 1). However, there was low variation in CWD in the first 300 km from Manaus of the BR-319 road, as well as at 600 km. All those sites (site clusters 1 to 5, and site cluster 11) had the lowest CWD stocks. They all had in common very high levels of soil physical constraints, such as deficient soil structure, shallow soil depth and anoxia, suggesting that the investigated soil properties could indeed be the driving mechanism for low CWD in waterlogged forests. The largest variability in CWD was observed at sites where soil physical properties were not restrictive. It is likely that at such sites sporadic and largely stochastic mortality events are the main

Table 6. Relationships between independent variables and coarse woody debris (CWD) stocks in 75 plots across central Amazonia.

| Variable | AIC | Fixed effect | Intercept | r^2_m | r^2_c | P |
|--|---------|--------------|-----------|---------|---------|--------|
| CWD with soil physical constraints | | | | | | |
| Depth | 92.397 | -0.258 | 3.411 | 0.37 | 0.37 | <0.001 |
| Anoxia | 96.682 | -0.233 | 3.421 | 0.33 | 0.33 | <0.001 |
| Π_1 | 98.058 | -0.084 | 3.52 | 0.33 | 0.33 | <0.001 |
| Π_2 | 101.135 | -0.123 | 3.548 | 0.32 | 0.32 | <0.001 |
| Structure | 104.635 | -0.168 | 3.446 | 0.29 | 0.30 | <0.001 |
| Topography | 109.159 | 0.112 | 3.015 | 0.03 | 0.34 | 0.16 |
| CWD:AGB with soil physical constraints | | | | | | |
| Depth | 98.97 | -0.215 | -2.094 | 0.27 | 0.27 | <0.001 |
| Anoxia | 102.362 | -0.192 | -2.089 | 0.24 | 0.24 | <0.001 |
| Π_1 | 103.65 | -0.068 | -2.010 | 0.22 | 0.22 | <0.001 |
| Π_2 | 105.81 | -0.100 | -1.992 | 0.20 | 0.20 | <0.001 |
| Structure | 109.00 | -0.130 | -2.087 | 0.16 | 0.16 | 0.013 |
| Topography | 111.91 | 0.111 | -2.425 | 0.03 | 0.24 | 0.18 |
| CWD with TI | 109.76 | -0.052 | 3.565 | 0.03 | 0.32 | 0.217 |
| CWD:AGB with TI | 112.91 | -0.04 | -1.99 | 0.02 | 0.23 | 0.341 |
| CWD with vegetation | | | | | | |
| AGB per tree | 105.746 | 1.748 | 2.498 | 0.11 | 0.32 | 0.013 |
| Stems density | 107.132 | -0.001 | 3.773 | 0.08 | 0.39 | 0.05 |
| Wood specific gravity | 110.107 | -1.137 | 3.86 | 0.01 | 0.37 | 0.335 |
| Height | 110.218 | 0.119 | 1.17 | 0.02 | 0.30 | 0.278 |
| AGB | 110.419 | 0.001 | 2.738 | 0.01 | 0.35 | 0.415 |
| Basal area | 110.742 | 0.01 | 2.776 | 0.01 | 0.35 | 0.557 |
| DBH | 117.31 | 0.04 | 2.199 | 0.03 | 0.35 | 0.259 |
| CWD:AGB with vegetation | | | | | | |
| AGB per tree | 112.82 | 0.766 | -2.633 | 0.02 | 0.22 | 0.288 |
| AGB | 110.58 | -0.003 | -1.720 | 0.04 | 0.35 | 0.077 |
| Stems density | 106.04 | -0.001 | -1.435 | 0.14 | 0.29 | 0.004 |
| Basal area | 111.81 | -0.025 | -1.750 | 0.03 | 0.34 | 0.166 |
| Wood specific gravity | 108.52 | -2.581 | -0.543 | 0.08 | 0.31 | 0.026 |
| DBH | 120.97 | 0.021 | -2.854 | 0.01 | 0.27 | 0.538 |
| Height | 113.46 | 0.034 | -2.937 | 0.01 | 0.23 | 0.758 |
| CWD with climate | | | | | | |
| Total precipitation | 109.655 | 0.001 | 1.258 | 0.05 | 0.37 | 0.234 |
| Precipitation in the driest quarter | 110.937 | 0.001 | 2.88 | 0.01 | 0.36 | 0.717 |
| CWD:AGB with climate | | | | | | |
| Total precipitation | 113.40 | 0.000 | -3.099 | 0.01 | 0.28 | 0.612 |
| Precipitation in the driest quarter | 113.66 | 0.000 | -2.431 | 0.00 | 0.28 | 0.927 |

AIC, Akaike Information Criterion.

determinants of CWD stocks at any one point in time. This may be particularly important in small plots (0.5 ha).

Despite large differences in soil physical conditions, no differences in the proportions of standing:fallen CWD stocks were observed across our study area. Standing:fallen ratios in our plots (0.29:0.59) were higher than those found by Palace et al. (2007) in the Brazilian states of Mato Grosso and Para (0.14:0.17), but much lower than values presented by Delaney et al. (1998) in Venezuela (0.80). These differences among regions suggest that the ratio of fallen to standing CWD varies across Amazonia as varies the mode of death (standing vs. fallen) (Chao et al. 2009b).

In addition to the observed relationships among CWD, soils and vegetation structure, it seems likely that variations in wood decomposition rates may be a source of variability for CWD stocks at landscape

level. For instance, we noted that low stocks in HRL forests were similar to the ones reported by Martius (1997) in fertile floodplain forests (*várzea*) in central Amazonia and by Chao et al. (2008) from a floodplain forest in Peru. These studies argued that the lower CWD stocks in these areas should be a result of higher wood decomposition rates under the cycle of wetting and drying. Here we argue that differences in forest structure, such as average tree diameter (DBH per tree) may also be a source of variation in wood decomposition rates (van Geffen et al. 2010). Stem thickness and surface area may exert controls on decomposition, with thinner trees associated with greater decomposition rates. As wood density, which is commonly recognised as a primary wood trait that affects decomposition rates (Chambers et al. 2000; Chao et al. 2009a; Chave et al. 2009), did not vary significantly across our study area,

therefore differences in tree diameter may be the primary driver of decomposition.

Another source of CWD variation in floodplain soils has been suggested by Martius (1997) who argued that flooding may redistribute CWD from higher lying areas to lower forests. This cannot be applied in our study area since plots are not located adjacent to large rivers. Out of the 45 of our interfluvial plots, only nine were located in flooding-affected areas, but none of them were close to high-energy-high-volume rivers that could carry wood away. None of the other plots that had high values of anoxia (anoxia value ≥ 2) had indicators of large-scale flooding. Therefore, we infer a mechanistic role for soil physical properties, whereby stagnant soil water creates an anaerobic environment that inhibits deep root growth (Gale and Barfod 1999). This may result in a small size of trees and increased tree mortality, which may decrease CWD stocks.

Underlying causes of variation

Soil and CWD. Sites north of the Amazonas river had no soil physical restriction. In such edaphic conditions CWD production may be driven by stochastic patterns of tree mortality, mostly related to senescence and storms (Gale and Barfod 1999; Toledo et al. 2012). As with the southern sites, restrictive soil physical conditions appeared to be important predictors of CWD, most likely resulting from edaphic influences on forest dynamics at the waterlogged sites. Topography in these areas was flatter than in the north, but other soil parameters were good predictors of CWD. Physical properties, such as shallow soils with high bulk density, poor aggregation and severe anoxic conditions can restrict deep root growth. In addition, such soil conditions limit tree establishment and tend to increase tree mortality rates (Gale and Barfod 1999; Gale and Hall 2001; Quesada et al. 2012). From all edaphic properties studied, effective depth and anoxia seem to be the most

related to CWD in our study area (Table 6). However, we observed that instead of increasing the volume of CWD and CWD stocks, severe soil physical conditions led to a decreasing in CWD stocks. In our study area, soil physical restrictions are likely to affect CWD by changing the overall forest structure – reducing average tree size and thereby also increasing decomposability – rather than by selecting low-wood-density species common to more dynamic forests, such as occurs in western Amazonia (Chao et al. 2009a). This was supported by the fact that average plot wood density did not vary with soil physical limitations in our study area. As soil water saturation exerts controls on soil weathering and development, it may imply that soil depth and structure are correlated with soil anoxia levels (Quesada et al. 2010, 2011). In this case, relationships between these soil variables and CWD could be interpreted as reflecting combined soil-vegetation effects (Figure 3).

Vegetation and CWD. The lack of a relationship between CWD and biomass found here can be compared to those presented by Chao et al. (2009a), who found weak relationships between CWD stocks and above-ground biomass across a broader area in Amazonia. Above-ground biomass per tree was a better predictor of CWD; however, the relationship was relatively weak.

Different levels of soil physical restrictions appeared to significantly correlated with forest structure (Table 5), implying an important influence on how, and for how long, living biomass is stored in forest ecosystems (Quesada et al. 2012). Soil restrictions may decrease average residence time of trees (Quesada et al. 2012), resulting in a population of thinner and shorter trees that individually store less biomass (also with more individuals per ha). On the other hand, we hypothesise, forests on soils without physical limitations tend to be populated by larger trees, simply because they can live

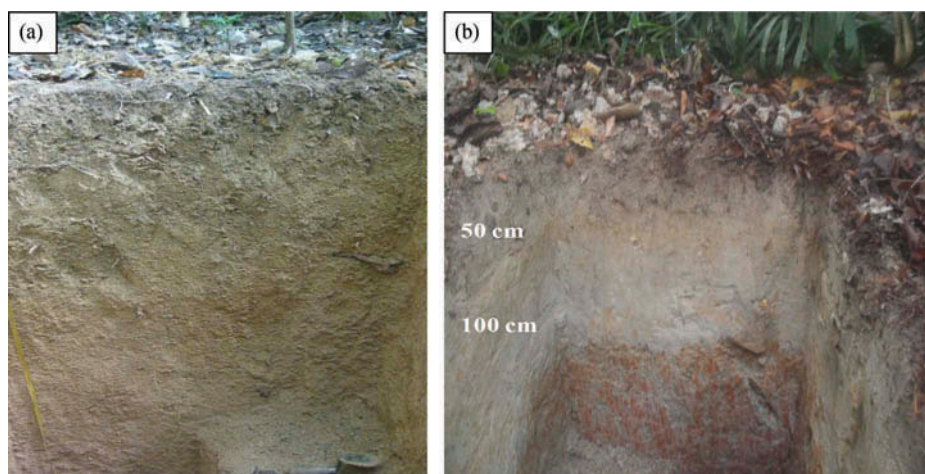


Figure 3. Typical Ferralsol for NR sites (BDFFP, Manaus): deep soils present good particle aggregation, low bulk density and no physical impediments to root growth, such as hardpans, anoxic conditions (a). Typical Plinthosol occurring at the interfluvium of the Purus and Madeira rivers (Site cluster 1): soil have shallow effective depth and very high bulk density which restrict root growth. Soft orange colouration in the first 50 cm and deep mottling indicate water fluctuation, common in these soils (b).

longer. The death of individuals with a high biomass results in a high mass of individual dead stem dead wood mass; small trees, such as those observed in HRL soil, would contribute smaller amounts of dead wood, even if at slightly higher mortality rates than in the other soil groups. For instance, NR and LRL had 1.6 and 1.3 higher AGB per tree, respectively, than HRL. Therefore, inputs of dead wood from mortality in both of these soil groups should be greater than in HRL sites, as we found a two-fold difference of CWD stocks between NR or LRL and HRL sites. Hence, our study reinforces an important relationship, already pointed out by Chao et al. (2009a), between mortality of mass input and CWD: the size of stems that die may be more important for CWD stocks than the number of stems that die. Furthermore, trees with higher biomass also have larger diameters and, therefore, lower potential decomposition rates (van Geffen et al. 2010). The balance of these factors should result in higher CWD stocks in NR and LRL soil and lower in HRL.

Moreover, as LRL sites had an intermediate level of edaphic restrictions, we also speculate that CWD stocks there were similar to those found in NR, probably because of subtle differences in tree mortality rates and tree size between NR and LRL. While forests on LRL soil had certain edaphic restrictions (e.g. soils shallower than NR soils) they had similar AGB to forests on NR soil, but with differences in stem density. Lower biomass per tree in LRL should have yielded lower CWD stocks than in NR, but it was not the case. It may have been due to that fact that, in the presence of some edaphic restrictions, tree mortality in LRL increased slightly, such as in Quesada et al. (2012) (but not determined in this study), and this resulted in equal or higher CWD stocks than those found on NR.

CWD:AGB ratio was not constant across the studied forests. CWD contributed proportionally less in HRL forests (Table 5) than in NR and LRL. Proportions of CWD:AGB at NR and LRL sites were larger than proportions in north-western Amazonia (0.103 ± 0.011), but similar to those in eastern Amazonia (0.132 ± 0.013 (Chao et al. 2009a)). Furthermore, the CWD:AGB ratios in this study were lower than those presented by Palace et al. (2007) in Mato Grosso and Pará (0.19–0.20). This points to the importance of including CWD measurement in local carbon balance studies since there is not an invariant proportion of AGB across Amazonia.

CWD stocks have usually been expressed as the CWD:AGB ratio, following the rationale that variation in CWD stocks should reflect the variation of AGB. We suggest that the use of the CWD:AGB ratio may not always be informative, as AGB is a function of varying combinations of tree size and number of individuals (for example, a similar AGB can be attained by a few large trees or by many small trees), and such variations in how the wood component is stored in AGB stocks may disconnect CWD stocks from AGB. Therefore, we suggest that over large spatial scales the CWD:AGB ratio should be used cautiously for the

following reasons: (1) CWD stocks are a function of dead wood input from mortality and decomposition rates (fluxes), which are more influenced by tree size at the moment of death than by whole stand AGB; (2) CWD:AGB is not a constant proportion, varying widely at large scales; (3) AGB is not related to CWD in the scale of this study, and is only weakly related to CWD stocks in a wider scale (Chao et al. 2009a), because stand AGB values are weakly related to individual tree size.

Conclusions

The findings of this study fill a gap in understanding the causes of CWD variation across central Amazonia. We found that differences in CWD stocks across the study area were related to a gradient of soil physical conditions, which affected forest structure and dynamics and, in turn, influenced CWD stocks. CWD was found to be positively related to biomass per tree and negatively related with soil physical restriction. We suggest that edaphic constraint may act on vegetation structure by decreasing individual tree biomass at the time of death (earlier death), by reducing tree height, diameter and individual biomass. Such changes on vegetation structure may result in a reduction in the mass of individual dead stems, along with increased rates of stem mortality and decomposition. This study thus highlights the importance of soil properties and its modulating power over forest structure, and so influencing CWD across large-scale soil gradients.

Acknowledgements

This contribution is derived from Demetrius L. Martins' M.Sc. thesis, with a fellowship from the Brazilian National Research Council (CNPq). Financial support for fieldwork and additional training was received from the Gordon and Betty Moore Foundation through the RAINFOR project. OP is supported by a European Research Council Advanced Grant, and is a Royal Society Wolfson Research Fellow. Logistical support was provided by BDFFP, PPBio and Large Scale Biosphere-Atmosphere Programme in Amazonia (LBA). Part of this manuscript was developed during the 2011 RAINFOR (Gordon and Betty Moore Foundation)-UFAC workshop in Rio Branco, Acre, Brazil. We thank, Luciano A. Castilho and Aires da S. Lopes for help with field work and Gabriel M. Moulatlet for providing corrected SRTM images for the interfluvial zone. Thaise Emilio helped with map preparation. We also give special thanks to Kuo-Jung Chao, Michael Palace, Michael Keller, Bruce Nelson, Philip Fearnside and Laszlo Nagy for their valuable comments. This is publication number 634 in the Biological Dynamics of Forest Fragment Project (BDFFP-INPA/STRI) technical series.

Supplemental data

Supplemental data for this article can be accessed here. <http://10.1080/17550874.2013.879942>

Notes on contributors

Demetrius L. Martins has a M.Sc. from INPA and is a master's student investigating necromass stocks variation across Amazonia with support from the Gordon and Betty Moore

Foundation grant to RAINFOR. His research interests include vegetation functioning, dynamics and structure and what mechanisms are responsible for their variation across landscape.

Juliana Schiatti is a PhD student and is interested in understanding how the variations in forest structure and function are related to hydrological processes.

Ted R. Feldpausch is a lecturer. His research interests include the ecology and effects of global change on tropical forests and savannas, land-use change and forest disturbance and recovery.

Flávio J. Luizao is a senior researcher. He has wide experience in ecological issues in Amazonia, especially in forest ecosystem ecology. His research interests include nutrient and organic matter cycling, soil ecology, the soil-plant relationship and agroforestry systems.

Oliver L. Phillips is Professor of Tropical Ecology. He leads the RAINFOR network of scientists to work together to monitor, understand and predict the behaviour of Amazon forests.

Ana Andrade manages the botanical collection of the Forest Survey Association of Amazonas, and takes part in projects of the Biological Dynamics of Forest Fragments Project (BDFFP). She has research interests in plant ecology and taxonomic identification of the trees of central Amazonia.

Carolina V. Castilho is a researcher and is interested in long-term ecological studies, and uses permanent plots to evaluate changes in biomass, structure and tree species composition in tropical forests.

Susan Laurance is a professor. Her research interests are in land use and climate change impacts in tropical forest communities.

Átila de Oliveira is interested in the structure and diversity of tropical forests.

Ieda Leao do Amaral is interested in the structure and diversity of tropical forests.

José J. Toledo is a professor. He has experience in forest ecology and his research interests are the causes of tree mortality and wood decomposition in tropical forests.

Laynara F. Lugli's has a M.Sc. from INPA and is interested in understanding biogeochemical cycles in tropical forests.

José Luiz Purri da Veiga Pinto has a M.Sc. from INPA and is interested in studying soils and root productivity.

Erick M. Oblitas Mendoza has an M.Sc. from INPA and has been studying the carbon stocks of Amazonian soils. He is currently a Ph.D. candidate, working on root productivity.

Carlos A. Quesada is a researcher. His research interests include biogeochemical cycles, Amazonian soils and their interaction with forest structure and dynamics.

References

- Affleck DLR, Gregoire TG, Valentine HT. 2005. Design unbiased estimation in line intersect sampling using segmented transects. *Environmental and Ecological Statistics*. 12: 139–154.
- Baker TR, Honorio CE, Phillips OL, van der Heijden G, Martin J, Garcia M, Silva Espejo J. 2007. Low stocks of coarse woody debris in a south-western Amazon forest. *Oecologia*. 152: 495–504.
- Baker TR, Phillips OL, Malhi Y, Almeida S, Arroyo L, Di Fiore A, Erwin T, Killeen TJ, Laurance SG, Laurance WF, et al. 2004. Variation in wood density determines spatial patterns in Amazonian forest biomass. *Global Change Biology*. 10: 545–562.
- Bell G, Kerr A, McNickle D, Woollons R. 1996. Accuracy of the line intersect method of post-logging sampling under orientation bias. *Forest Ecology and Management*. 84: 23–28.
- Chambers JQ, Higuchi N, Schimel JP, Ferreira LV, Melack JM. 2000. Decomposition and carbon cycling of dead trees in tropical forests of the central Amazon. *Oecologia*. 122: 380–388.
- Chao KJ, Phillips OL, Baker TR. 2008. Wood density and stocks of coarse woody debris in a northwestern Amazonian landscape. *Canadian Journal of Forest Research*. 38: 267–276.
- Chao KJ, Phillips OL, Baker TR, Peacock J, Lopez-Gonzalez G, Martínez RV, Monteagudo A, Torres-Lezama A. 2009a. After trees die: quantities and determinants of necromass across Amazonia. *Biogeosciences*. 6: 1615–1626.
- Chao KJ, Phillips OL, Monteagudo A, Torres-Lezama A, Vásquez Martínez R. 2009b. How do trees die? Mode of death in northern Amazonia. *Journal of Vegetation Science*. 20: 260–268.
- Chauvel A, Lucas Y, Boulet R. 1987. On the genesis of the soil mantle of the region of Manaus, Central Amazonia, Brazil. *Cell Mol Life Sci*. 43: 234–241.
- Chave J. 2005. Measuring wood density for tropical forest trees. *Measuring wood density for tropical forest trees - A field manual for the CTFS sites 7*.
- Chave J, Coomes DA, Jansen S, Lewis SL, Swenson NG, Zanne AE. 2009. Towards a worldwide wood economics spectrum. *Ecology letters*. 12: 351–366.
- Clark DB, Clark DA, Brown S, Oberbauer SF, Veldkamp E. 2002. Stocks and flows of coarse woody debris across a tropical rain forest nutrient and topography gradient. *Forest Ecology and Management*. 164: 237–248.
- Delaney M, Brown S, Lugo AE, Lezama AT, Quintero NB, Torres-Lezama A. 1998. The Quantity and Turnover of Dead Wood in Permanent Forest Plots in Six Life Zones of Venezuela. *Biotropica*. 30: 2–11.
- ESRI. 2005. ESRI ArcGIS 9 Users Manual. <http://www.esri.com/>.
- Feldpausch TR, Banin L, Phillips OL, Baker TR, Lewis SL, Quesada CA, Affum-Baffoe K, Arets EJMM, Berry NJ, Bird M, et al. 2011. Height-diameter allometry of tropical forest trees. *Biogeosciences*. 8: 1081–1110.
- Feldpausch TR, Lloyd J, Lewis SL, Brien RJW, Gloor E, Mendoza AM, Lopez-Gonzalez G, Banin L, Salim KA, Abu Salim K, Affum-Baffoe K, et al. 2012. Tree height integrated into pan-tropical forest biomass estimates. *Biogeosciences*. 9: 3381–3403.
- Feldpausch TR, McDonald AJ, Passos CAM, Lehmann J, Riha SJ. 2006. Biomass, harvestable area, and forest structure estimated from commercial timber inventories and remotely sensed imagery in southern Amazonia. *Forest Ecology and Management*. 233: 121–132.
- Gale N, Barfod AS. 1999. Canopy tree mode of death in a western Ecuadorian rain forest. *Journal of Tropical Ecology*. 15: 415–436.
- Gale N, Hall P. 2001. Factors determining the modes of tree death in three Bornean rain forests. *Journal of Vegetation Science*. 12: 337–348.
- Gregoire TG, Valentine HT. 2003. Line intersect sampling: Ell-shaped transects and multiple intersections. *Environmental and Ecological Statistics*. 10: 263–279.
- Hijmans RJ, Cameron SE, Parra JL, Jones PG, Jarvis A. 2005. Very high resolution interpolated climate surfaces for global land areas. *International Journal of Climatology*. 25: 1965–1978.
- IBGE. 1997. Recursos naturais e meio ambiente: uma visão do Brasil. Instituto Brasileiro de Geografia e Estatística, 2nd ed.
- IUSS (International Union of Soil Science) Working Group WRB. World reference base for soil resources. 2006: A framework for international classification, correlation and communication, World Soil Resources Report 103, FAO, Rome.

- Jirka S, McDonald AJ, Johnson MS, Feldpausch TR, Couto EG, Riha SJ. 2007. Relationships between soil hydrology and forest structure and composition in the southern Brazilian Amazon. *Journal of Vegetation Science*. 18: 183–194.
- Keller M, Palace M, Asner GP, Pereira R, Silva JNM. 2004. Coarse woody debris in undisturbed and logged forests in the eastern Brazilian Amazon. *Global Change Biology*. 10: 784–795.
- Kissing LB, Powers JS. 2010. Coarse woody debris stocks as a function of forest type and stand age in Costa Rican tropical dry forest: long-lasting legacies of previous land use. *Journal of Tropical Ecology*. 26: 467–471.
- Laurance WF, Ferreira LV, Rankin-de Merona JM, Laurance SG. 1998. Rain Forest Fragmentation and the Dynamics of Amazonian Tree Communities. *Ecology*. 79: 2032–2040.
- Magnusson WE, Lima AP, Luizão R, Luizão F, Costa FRC, Castilho CV, Kinupp VF. 2005. RAPELD, uma modificação do método de Gentry para inventários de biodiversidade em sítios para pesquisa ecológica de longa duração. *Biota Neotropica* (Ed Portuguesa). 5: 2 1–6.
- Malhi Y, Wood D, Baker TR, Wright J, Phillips OL, Cochrane T, Meir P, Chave J, Almeida S, Arroyo L, et al. 2006. The regional variation of above-ground live biomass in old-growth Amazonian forests. *Global Change Biology*. 12: 1107–1138.
- Martius C. 1997. The central Amazon floodplain - ecology of a pulsing system. In: Junk WJ, editor. *The Central Amazon Floodplain - Ecology of a Pulsing System*. Springer Verlag, Germany; pp. 267–276.
- Moore ID, Grayson RB, Ladson AR. 1991. Digital terrain modeling: a review of hydrological, geomorphological and biological applications. *Hydrological Processes*. 5: 3–30.
- Nakagawa S, Schielzeth H. 2013. A general and simple method for obtaining R^2 from generalized linear mixed-effects models. *Methods in Ecology and Evolution*. 4: 133–142.
- Nascimento HEM, Laurance WF. 2002. Total aboveground biomass in central Amazonian rainforests: a landscape-scale study. *Forest Ecology and Management*. 168: 311–321.
- Negrón-Juárez RI, Chambers JQ, Guimarães G, Zeng H, Raupp CFM, Marra DM, Ribeiro GHPM, Saatchi SS, Nelson BW, Higuchi N. 2010. Widespread Amazon forest tree mortality from a single cross-basin squall line event. *Geophysical Research Letters*. 37: 1–5.
- Nogueira EM, Fearnside PM, Nelson BW, Franca MB, Oliveira ACA. 2008. Tree height in Brazil's 'arc of deforestation': shorter trees in south and southwest Amazonia imply lower biomass. *Forest Ecology and Management*. 255: 2963–2972.
- Palace M, Keller M, Asner GP, Silva J, Passos C. 2007. Necromass in undisturbed and logged forests in the Brazilian Amazon. *Forest Ecology and Management*. 238: 309–318.
- Palace M, Keller M, Frolking S, Hurtt H. 2012. A review of above ground necromass in tropical forests. In: Sudarshana P, Nageswara-Rao M and Soneji JR, editors. *Tropical Forests*. InTech, Croatia; 215–252.
- Palace M, Keller M, Silva H. 2008. Necromass production: studies in undisturbed and logged Amazon forests. *Ecological Applications*. 18: 873–884.
- Phillips OL, Aragão LEOC, Lewis SL, Fisher JB, Lloyd J, Lopez-Gonzalez G, Malhi Y, Monteagudo A, Peacock J, Quesada CA, et al. 2009. Drought sensitivity of the Amazon Rainforest. *Science*. 323: 1344–1347.
- Phillips OL, Baker T, Arroyo L, Higuchi N, Killeen T, Laurance WF, Lewis SL, Lloyd J, Malhi Y, Monteagudo A, et al. 2004. Patterns and process in Amazon tree turnover, 1976–2001. *Philosophical Transactions of the Royal Society of London Series B*. 359: 437–462.
- Pinheiro J, Bates D, DebRoy S, Sarkar D. 2012. nlme: linear and nonlinear mixed effects models. R Packag. version 3. 1–103. Vienna, Austria R Found. Stat. Comput.
- Quesada CA, Lloyd J, Anderson LO, Fyllas NM, Schwarz M, Czimczik CI. 2011. Soils of Amazonia with particular reference to the RAINFOR sites. *Biogeosciences*. 8: 1415–1440.
- Quesada CA, Lloyd J, Schwarz M, Patiño S, Baker TR, Czimczik CI, Fyllas NM, Martinelli LA, Nardoto GB, Schmerler J, et al. 2010. Variations in chemical and physical properties of Amazon forest soils in relation to their genesis. *Biogeosciences*. 7: 1515–1541.
- Quesada CA, Phillips OL, Schwarz M, Czimczik CI, Baker TR, Patiño S, Fyllas NM, Hodnett MG, Herrera R, Almeida S, et al. 2012. Basin-wide variations in Amazon forest structure and function are mediated by both soils and climate. *Biogeosciences*. 9: 2203–2246.
- R Development Core Team. 2013. R: A Language and Environment for Statistical Computing. R Foundation for Statistical Computing. Vienna (Austria).
- RADAMBRASIL. 1978. Levantamento dos Recursos Naturais. Rio de Janeiro (Brazil): Ministério de Minas e Energia, Departamento Nacional de Produção Mineral.
- Ribeiro JEL, Hopkins MJG, Vicentini A, Sothers CA, Costa MA, Brito JM, Souza MAD, Martins LH, Lohmann LG, Assunção PACL. 1999. Flora da Reserva Ducke: guia de identificação das plantas vasculares de uma floresta de terra firme na Amazônia Central, Flora. Manaus - Brazil: INPA - UFAM.
- Rice AH, Pyle EH, Saleska SR, Hutrya L, Palace M, Keller M, de Camargo PB, Portillo K, Marques DF, Wofsy SC. 2004. Carbon Balance and Vegetation Dynamics in an Old-Growth Amazonian Forest. *Ecological Applications*. 14: 55–71.
- Sombroek W. 2000. Amazon landforms and soils relation to biological diversity. *Acta Amazonica*. 30: 81–100.
- Ter Steege H, Sabatier D, Castellanos H, van Andel T, Duivenvoorden J, Adalardo de Oliveira A, Ek R, Lilwah R, Maas P, Mori S. 2000. An analysis of the floristic composition and diversity of Amazonian forests including those of the Guiana Shield. *Journal of Tropical Ecology*. 16: 801–828.
- Toledo JJ, Magnusson WE, Castilho CV, Nascimento HEM. 2012. Tree mode of death in Central Amazonia: Effects of soil and topography on tree mortality associated with storm disturbances. *Forest Ecology and Management*. 263: 253–261.
- Wilcke W, Hess T, Bengel C, Homeier J, Valarezo C, Zech W. 2005. Coarse woody debris in a montane forest in Ecuador: mass, C and nutrient stock, and turnover. *Forest Ecology and Management*. 205: 139–147.
- Zanne AE, Lopez-Gonzalez G, Coomes DA, Ilic J, Jansen S, Lewis SL, Miller R, Swenson NG, Wiemann M, Chave J. 2009. Data from: Towards a worldwide wood economics spectrum. Dryad Digital Repository.
- van Geffen KG, Poorter L, Sass-Klaassen U, van Logtestijn RSP, Cornelissen JHC. 2010. The trait contribution to wood decomposition rates of 15 Neotropical tree species. *Ecology*. 91: 3686–3697.
- van Wagner CE. 1968. The line intersect method in forest fuel sampling. *Forest science*. 24: 469–483.